



Description

The TT1510 and TT1512 are high performance instrumentation amplifiers suitable for sensor preamplifier and bus summing applications. The ICs are available in a variety of packages and pin configurations, making them pin compatible with the Analog Devices SSM2019 and SSM2017 (discontinued), and the Texas Instruments INA217 and INA163.

Gain for both parts is adjustable via one external resistor, making it possible to control gain over a wide range with a single-gang potentiometer. The TT1510 gain equation is identical to that of the SSM2019, reaching 6dB gain with a 10k resistor. The TT1512 reaches 0dB gain with a 10k resistor. Because the TT1512 exhibits significantly lower noise at lower gain settings, it is recommended over the TT1510 for new designs.

Designed from the ground up using a complementary dielectric isolation process and including laser-trimmed Si-Chrome thin film resistors, the TT1510 and TT1512 improve on existing integrated preamps by offering lower noise at low gains, wider bandwidth, higher slew rate, lower distortion, and lower supply current. The parts feature internal ESD overload protection on all critical pins. In short, the TT1510 and TT1512 provide superior performance in a popular format.

FEATURES

Low Noise:
1 nV/ $\sqrt{\text{Hz}}$ input noise (60dB gain) (TT1510)
34 nV/ $\sqrt{\text{Hz}}$ input noise (0dB gain) (TT1512)

Low THD+N
0.001% @ 40dB gain
0.005% @ 60dB gain

Low Current: 6mA typ.

Wide Bandwidth: 7MHz @ $G=100$

High Slew Rate: 19 V/ μs

Wide Output Swing: $\pm 13.3\text{V}$ on $\pm 15\text{V}$ supplies

Gain adjustable from 0 to $>60\text{dB}$ with one external resistor

Industry Standard Pinouts

APPLICATIONS

Differential Low Noise Preamplifiers
Differential Summing Amplifiers
Differential Variable Gain Amplifiers
Microphone Preamplifiers
Moving-Coil Transducer Amplifiers
Line Input Stages
Audio
Sonar
Instrumentation

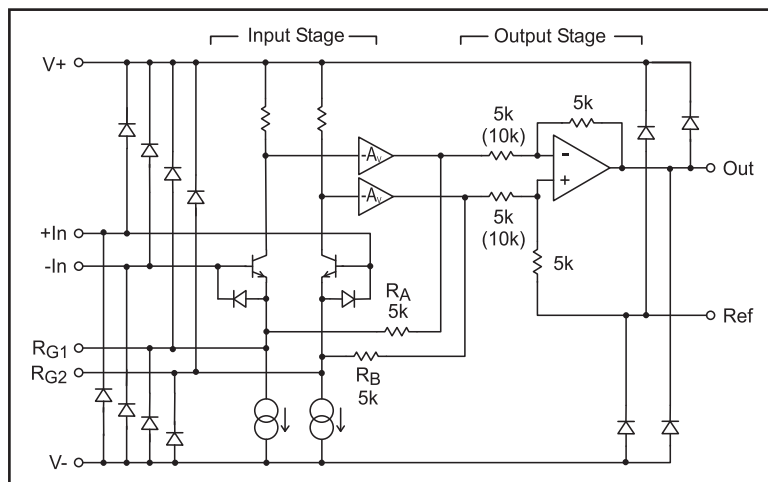


Figure 1. TT1510 / TT1512 Equivalent Circuit Diagram
(TT1512 values shown in parentheses)

| Pin Name | CDIP8 PKG | PDIP8 Pkg | FP8 Pkg | LCC16 Pkg |
|----------|-----------|-----------|---------|-----------|
| RG1 | 1 | 1 | 1 | 3 |
| -In | 2 | 2 | 2 | 4 |
| +In | 3 | 3 | 3 | 5 |
| V- | 4 | 4 | 4 | 6 |
| Ref | 5 | 5 | 5 | 10 |
| Out | 6 | 6 | 6 | 9 |
| V+ | 7 | 7 | 7 | 11 |
| RG2 | 8 | 8 | 8 | 12 |

Table 1. 1510 / 1512 pin assignments

APPLICATIONS

Gain Setting

A single external resistor (R_G) between the RG1 and RG2 pins is all that is needed to set the gain of the TT1510/TT1512, according to the formulae:

$$\text{for the TT1510: } A_V = 1 + \frac{10k}{R_G} \quad \text{or}$$

$$\text{for the TT1512: } A_V = 0.5 + \frac{5k}{R_G} \quad \text{where}$$

A_V is the voltage gain of the part.

Either part may reach unity gain, but the value of R_G required varies drastically between the two parts. For the TT1510, gain is 0dB when R_G is infinite (open); This is the minimum gain for the TT1510. At infinite R_G , the TT1512 reaches -6dB gain; This is the minimum gain for the TT1512. With $R_G = 10k$, the TT1512 reaches 0dB gain.

Overall gain accuracy depends on the tolerance of R_G and the accuracy of the internal thin-film resistors connected to pins R_{G1} and R_{G2} in the TT1510/TT1512 (R_A & R_B in Figure 1). These internal resistors have a typical initial accuracy (at room temperature) of $\pm 0.5\%$, and are typically stable with temperature to within $\pm 200 \text{ ppm}/^\circ\text{C}$. Gain will drift with temperature based on the mismatch between the temperature coefficient of the external R_G and that of the internal resistors R_A & R_B .

For variable-gain applications where gain accuracy is important, TT Semiconductor recommends using discrete, switched

resistors for R_G . Where continuous control is required, or where gain accuracy is less critical, a potentiometer may be used. In such applications, designers should take care in specifying the element construction to avoid excess noise. The potentiometer taper will set the circuit's characteristic of gain vs. pot rotation. Typically, reverse log (audio) taper elements offer the desired behavior in which gain increases with clockwise rotation (and lower values for R_G).

Noise Performance

Both parts exhibit excellent voltage noise performance of $\sim 1 \text{ nV}/\text{Hz}$ at high gains. With $\sim 2 \text{ pA}/\text{Hz}$ current noise, they are optimized for relatively low source impedance applications, such as dynamic microphones with typically a few hundred ohm output impedances. But, because they have different internal gain structures, the TT1510 has higher equivalent input noise at 0dB gain ($\sim 57 \text{ nV}/\text{Hz}$) than the TT1512, which runs 4.5 dB lower at $\sim 34 \text{ nV}/\text{Hz}$. The unusual and superior topology of the TT1512 makes its noise performance comparable to some of the better discrete designs currently available.

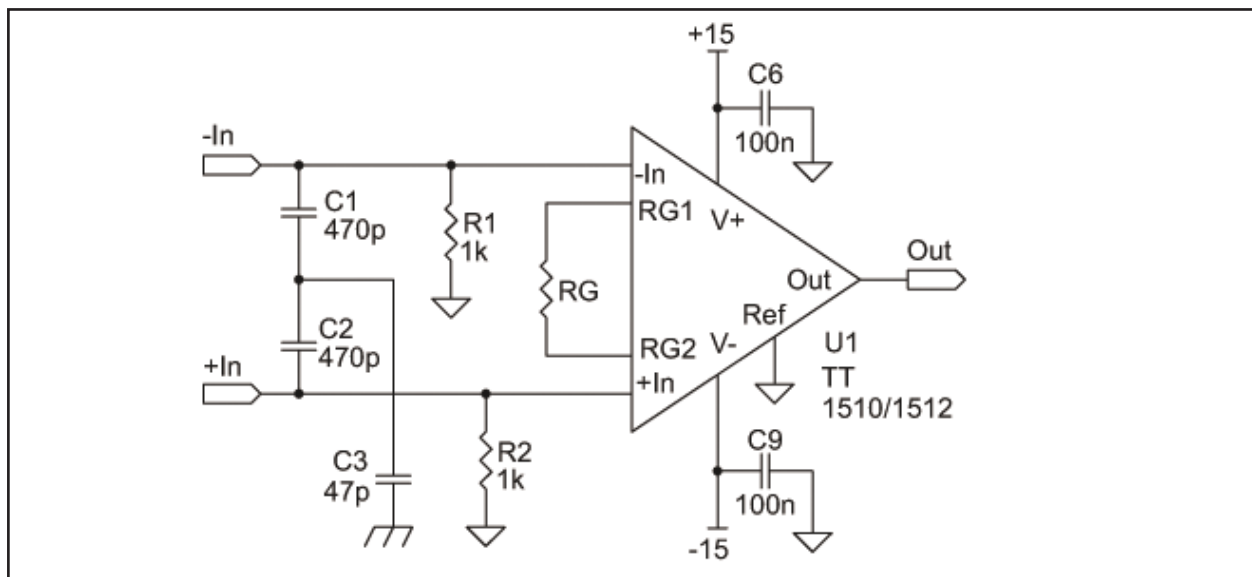


Figure 2. Basic TT1510 / TT1512 Circuit

Inputs

Simple Configurations

As shown in Figure 1, the TT1510/TT1512 includes protection diodes at all pins except V+ and V-. These diodes reduce the likelihood that accidental electrostatic discharge (ESD) or electrical over stress (EOS) will damage the ICs. Other diodes across the base-emitter junctions of the input transistors prevent excessive reverse biasing of these junctions (which would degrade the noise performance of the input devices).

Other than the connection to the protection diodes, the TT1510/TT1512 input pins are connected only to the bases of their respective input devices. For proper operation, the bases must be provided a source of dc bias that will maintain the inputs within the IC's input common-mode range. Two different schemes for this are shown in Figures 2 and 3. Figure 2 is simple, but its output will need to be ac-coupled to the next stage, particularly if R_G is variable to allow gain adjustment. Figure 3 shows the addition of an integrator to servo the output offset. In this circuit, the output offset will depend on that of the external opamp U2, which may be small enough to avoid ac-coupling the output.

Note that the values of R1 and R2 in these figures are small to minimize pickup of unwanted noise and

interference. 1k Ω is often used, which yields a differential input impedance of 2k Ω , often considered to be ideal for many microphones.

Phantom Power

Phantom power is required for many condenser microphones. TT Semiconductor recommends the circuit of Figure 4 when phantom power is included. R3 and R4 are used to limit the current that flows through the bridge circuit of D1 through D4 when C4 and C5 are discharged after being charged to 48V from the phantom voltage supply. R3 and R4 should be kept very small as shown in order to introduce minimal additional noise. C4 and C5 should be kept large to minimize high-pass filtering of the signal, and to avoid amplification of low-frequency current noise in the TT1510/TT1512 input stage.

Other manufacturers have recommended, and many pro audio products include, a zener diode arrangement connected to the bridge rectifier instead of the connection to V+ and V- as shown in Figure 4. While this arrangement does not keep the inputs inside the common mode range, it has the advantage of working even when the power is off. For further insights into this subject, see the Audio Engineering Society preprint "The

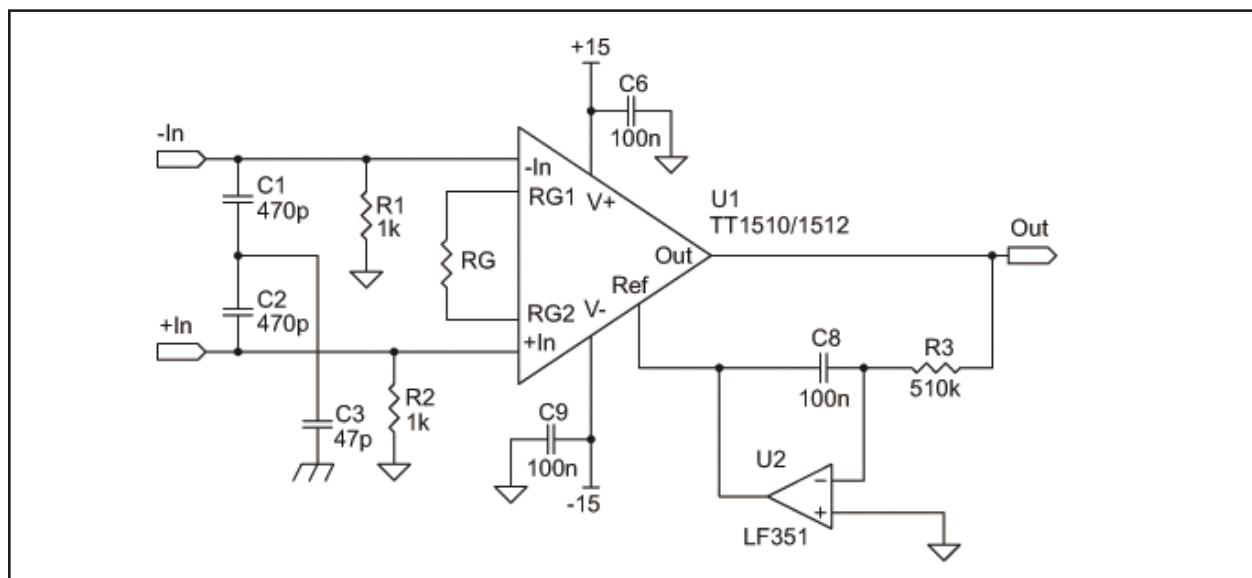


Figure 3. TT1510 / TT1512 Circuit with Output Offset Servo

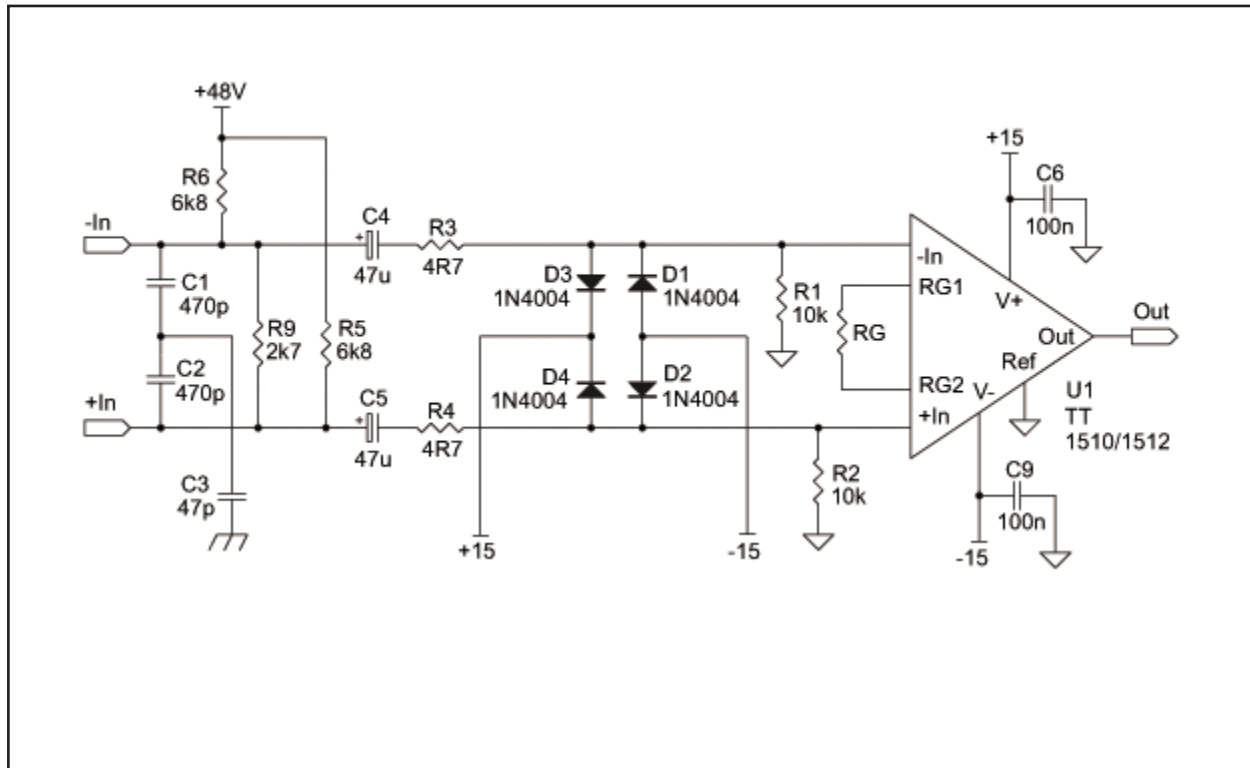


Figure 4. Recommended TT1510 / TT1512 Circuit with Phantom Power

48 Volt Phantom Menace,” by Gary K. Hebert and Frank W. Thomas, presented at the 110th AES Convention.

When using the more conventional zener diode approach, R3 and R4 must be made larger (e.g., 51 Ω) in order to limit peak currents enough to protect the zener diodes. In such cases, these resistors will limit the noise performance of the preamp. The ultimate floor is set by the impedance of the microphone, but any additional series resistance further degrades performance.

Input Impedance and Line Input Configurations

A higher common-mode input impedance may be desirable (compared with that of Figures 2 and 3), especially when a mic pre-amp input is configured to double as a line receiver. The circuit of Figure 4 also accommodates this objective. In this circuit, R1 and R2 are increased to 10k Ω , boosting the low-frequency common-mode input impedance from 500 Ω to about 2 k Ω . A value of 2.7 k Ω for R9 keeps the differential input impedance at 2 k Ω without reducing the common-mode input impedance.

A line input can then be added by connecting 5.1 k Ω resistors from the line input's + and - input terminals to the positive and negative inputs, respectively, of the TT1510/TT1512 of Figure 4. This increases the differential line input impedance to ~ 12.2 k Ω , and results in a net attenuation (pad) of approximately 15.7 dB between the line input and the output shown in Figure 4. Since, in many pro audio applications, the minimum pre-amp gain is 10 dB, the pad effectively cancels out this minimum gain while adding an additional 6dB of attenuation, which allows the resulting line input to accommodate high line level signals.

Reference Terminal

The “Ref” pin provides a reference for the output signal, and is normally connected to analog ground. If necessary, the “Ref” pin can be used for offset correction or DC level shifting. A non-zero reference source resistance will reduce the IC's common-mode rejection (CMR) by the ratio of 10 k Ω / R_{REF} .

Absolute Maximum Ratings ($T_A = 25^\circ\text{C}$)

| | | | |
|--|------------|--|---------------|
| Positive Supply Voltage (V_{CC}) | +20 V | Operating Temperature Range (T_{OP}) | -55 to +175°C |
| Negative Supply Voltage (V_{EE}) | -20 V | Storage Temperature Range (T_{ST}) | -55 to +200°C |
| Output Short-Circuit Duration (t_{SH}) | Continuous | Lead Temp. (T_{LEAD}) (Soldering 10 sec) | 260 °C |

Recommended Operating Conditions

| Parameter | Symbol | Conditions | Min | Typ | Max | Units |
|-------------------------|----------|------------|-----|-----|-----|-------|
| Positive Supply Voltage | V_{CC} | | +5 | | +20 | V |
| Negative Supply Voltage | V_{EE} | | -5 | | -20 | V |

Electrical Characteristics²

| Parameter | Symbol | Conditions | TT1510 | | | TT1512 | | | Units |
|------------------------------------|-------------------|--|----------|---------|---------|----------|----------|---------|--------|
| | | | Min | Typ | Max | Min | Typ | Max | |
| Supply Current | $I_{CC}, -I_{EE}$ | No signal $V_{CC} = -V_{EE} = 20\text{V}$ | — | 6.0 | 7.9 | — | 6.0 | 7.9 | mA |
| | | | — | — | 8.0 | — | — | 8.0 | mA |
| Input Bias Current | I_B | No signal; Either input connected to GND | — | 4.8 | 14 | — | 4.8 | 14 | A |
| Input Offset Current | I_{B-OFF} | No signal | -1.4 | — | +1.4 | -1.4 | — | +1.4 | A |
| Offset Voltage | | | | | | | | | |
| Output Stage Output Offset | $V_{OS_{OO}}$ | No Signal, $V_{CM}=0$ | -5 | — | +5 | -5 | — | +5 | mV |
| Input Stage Input Offset | $V_{OS_{II}}$ | | -250 | — | +250 | -250 | — | +250 | V |
| Total Output Offset | | G=voltage gain | -5-0.25G | | 5+0.25G | -5-0.25G | | 5+0.25G | mV |
| Input Voltage Range Common Mode | V_{IN-CM} | Common mode, all gains | — | ± 13 | — | — | ± 13 | — | V |
| Differential Mode | $V_{IN-UNBAL}$ | Unbalanced One input to GND, 0dB gain | -13 | — | +13 | -13 | — | +13 | V |
| Differential Gain | G_{diff} | | 0 | — | 70 | -6 | — | 64 | dB |
| Ref Input Voltage Range | | | — | ± 8 | — | — | ± 8 | — | V |
| Ref Input Impedance | | | — | 10 | — | — | 15 | — | k |
| Ref Input Gain to Output | | | — | 0 | — | — | 0 | — | dB |
| Input Impedance | $Z_{IN-DIFF}$ | Differential 0dB gain | — | 32 1.9 | — | — | 37 1.9 | — | M pF |
| | | 20dB gain | — | 32 2.0 | — | — | 37 2.0 | — | M pF |
| | | 40dB gain | — | 32 2.5 | — | — | 36 3.1 | — | M pF |
| | | 60dB gain | — | 29 8.0 | — | — | 31 13.9 | — | M pF |
| | Z_{IN-CM} | Common mode all gains | — | 8 7.7 | — | — | 9 7.7 | — | M pF |

1. All specifications are subject to change without notice.

2. Unless otherwise noted, $V_{CC} = +15\text{V}$, $V_{EE} = -15\text{V}$, $T_A = -55^\circ\text{C}$ to $+125^\circ\text{C}$

| Electrical Characteristics (Cont'd) | | | | | | | | | |
|-------------------------------------|---------------|--|----------|------------|--------------------|----------|------------|-------------------|--------|
| Parameter | Symbol | Conditions | TT1510 | | | TT1512 | | | Units |
| Common Mode Rejection | CMR | $V_{CM} = \pm 10V$; DC to 60 Hz | | | | | | | |
| | | 0 dB gain | 45 | 60 | — | 45 | 60 | — | dB |
| | | 20 dB gain | 65 | 80 | — | 65 | 80 | — | dB |
| | | 40 dB gain | 85 | 100 | — | 85 | 100 | — | dB |
| | | 60 dB gain | 105 | 120 | — | 105 | 120 | — | dB |
| Power Supply Rejection | PSR | $V_{CC} = -V_{EE}$; $\pm 5V$ to $\pm 20V$; DC to 60 Hz | | | | | | | |
| | | 0 dB gain | — | 85 | — | — | 60 | — | dB |
| | | 20 dB gain | — | 105 | — | — | 105 | — | dB |
| | | 40 dB gain | — | 120 | — | — | 120 | — | dB |
| | | 60 dB gain | — | 124 | — | — | 124 | — | dB |
| Total Harmonic Distortion | THD+N | $V_{OUT} = 7V_{rms}$; $R_L = 5 k$ $f = 1kHz$; BW = 20 kHz | | | | | | | |
| | | 0 dB gain | — | 0.0005 | — | — | 0.001 | — | % |
| | | 20 dB gain | — | 0.0012 | — | — | 0.004 | — | % |
| | | 40 dB gain | — | 0.0016 | — | — | 0.005 | — | % |
| | | 60 dB gain | — | 0.005 | — | — | 0.008 | — | % |
| Equivalent Input Noise | $e_{n(OUT)}$ | $f = 1kHz$, | | | | | | | |
| | | 0 dB gain | — | 57 | — | — | 34 | — | nV/ Hz |
| | | 20 dB gain | — | 7 | — | — | 4.6 | — | nV/ Hz |
| | | 40 dB gain | — | 1.7 | — | — | 1.4 | — | nV/ Hz |
| | | 60 dB gain | — | 1 | — | — | 1 | — | nV/ Hz |
| Input Current Noise | i_n | 60 dB gain | — | 2.0 | — | — | 2.0 | — | pA/ Hz |
| Noise Figure | NF | 60 dB gain | | | | | | | |
| | | $R_S = 150$ | — | 1.6 | — | — | 1.6 | — | dB |
| | | $R_S = 200$ | — | 1.3 | — | — | 1.3 | — | dB |
| Slew Rate | SR | $R_L = 2 k$ $C_L = 50 pF$ | 13 | 19 | — | 13 | 19 | — | V/ s |
| Bandwidth -3dB | BW_{-3dB} | $R_L = 2 k$ $C_L = 10 pF$ | | | | | | | |
| | | 0 dB gain | — | 15 | — | — | 11 | — | MHz |
| | | 20 dB gain | — | 8 | — | — | 9 | — | MHz |
| | | 40 dB gain | — | 7 | — | — | 7 | — | MHz |
| | | 60 dB gain | — | 3 | — | — | 1.6 | — | MHz |
| Output Gain Error | $G_{ER(OUT)}$ | $f = 1kHz$; $R_L = 2 k$ | | | | | | | |
| | | $R_G = \infty$, $G = 0$ dB | -0.5 | — | +0.5 | — | — | — | dB |
| | | $R_G = 1.1 k$, $G = 20$ dB | -0.5 | — | +0.5 | — | — | — | dB |
| | | $R_G = 101$, $G = 40$ dB | -0.5 | — | +0.5 | — | — | — | dB |
| | | $R_G = 10$, $G = 60$ dB | -0.5 | — | +0.5 | — | — | — | dB |
| | | $R_G = 10 k$, $G = 0$ dB | — | — | — | -0.5 | — | +0.5 | d |
| | | $R_G = 526.3$, $G = 20$ dB | — | — | — | -0.5 | — | +0.5 | dB |
| | | $R_G = 50.3$, $G = 40$ dB | — | — | — | -0.5 | — | +0.5 | dB |
| | | $R_G = 5$, $G = 60$ dB | — | — | — | -0.5 | — | +0.5 | dB |
| Output Voltage Swing | V_O | $R_L = 2 k$ all gains | ± 13 | ± 13.3 | — | ± 13 | ± 13.3 | — | V |
| Output Short Circuit Current | I_{SC} | $R_L = 0$ | — | ± 17 | — | — | ± 17 | — | mA |
| Minimum Resistive Load | R_{Lmin} | | 2 | — | — | 2 | — | — | k |
| Maximum Capacitive Load | C_{Lmax} | | — | — | 300 | — | — | 300 | pF |
| Gain Equation | | | A_V | 1 | $\frac{10 k}{R_G}$ | A_V | 0.5 | $\frac{5 k}{R_G}$ | |

Package Information

Both the TT1510 and TT1512 are available in 8-pin CDIP, 8-pin Extended Temperature PDIP, 8-pin Flatpack, and 16-pin LCC packages. Other version/package combinations will be considered based on customer demand. The package dimensions are shown in Figures 5 thru 8, while pinouts are given in Table 1.

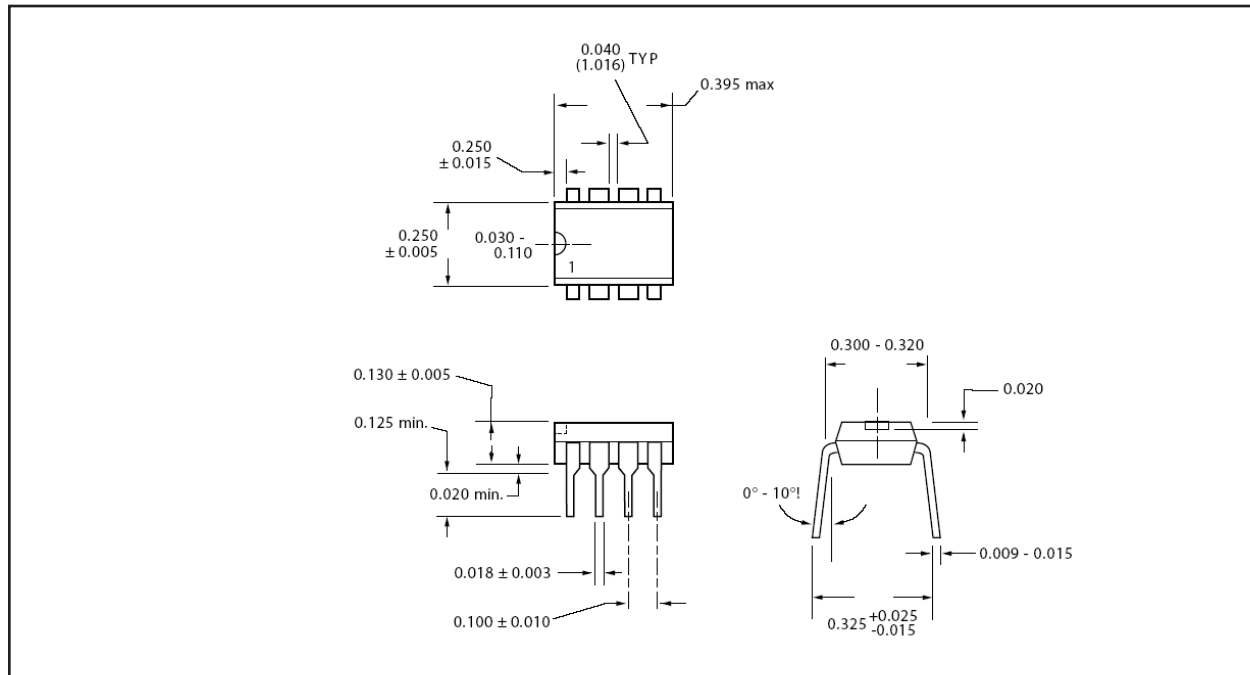


Figure 5. 8-pin Extended Temperature PDIP package outline

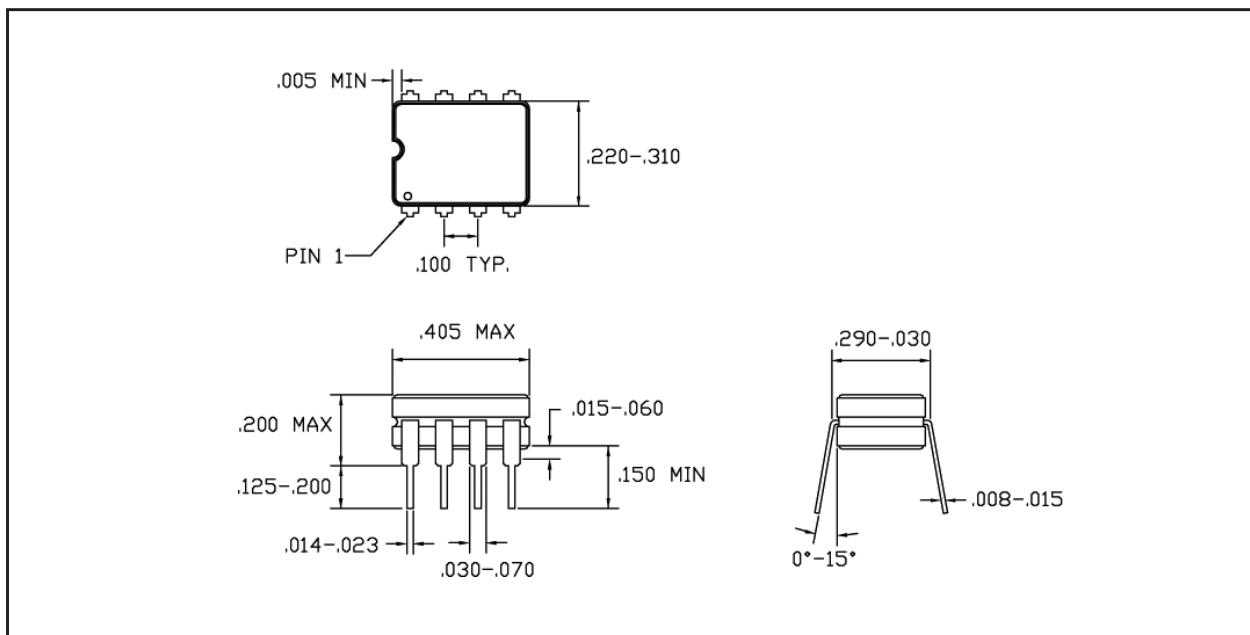


Figure 6. 8-pin CDIP package outline

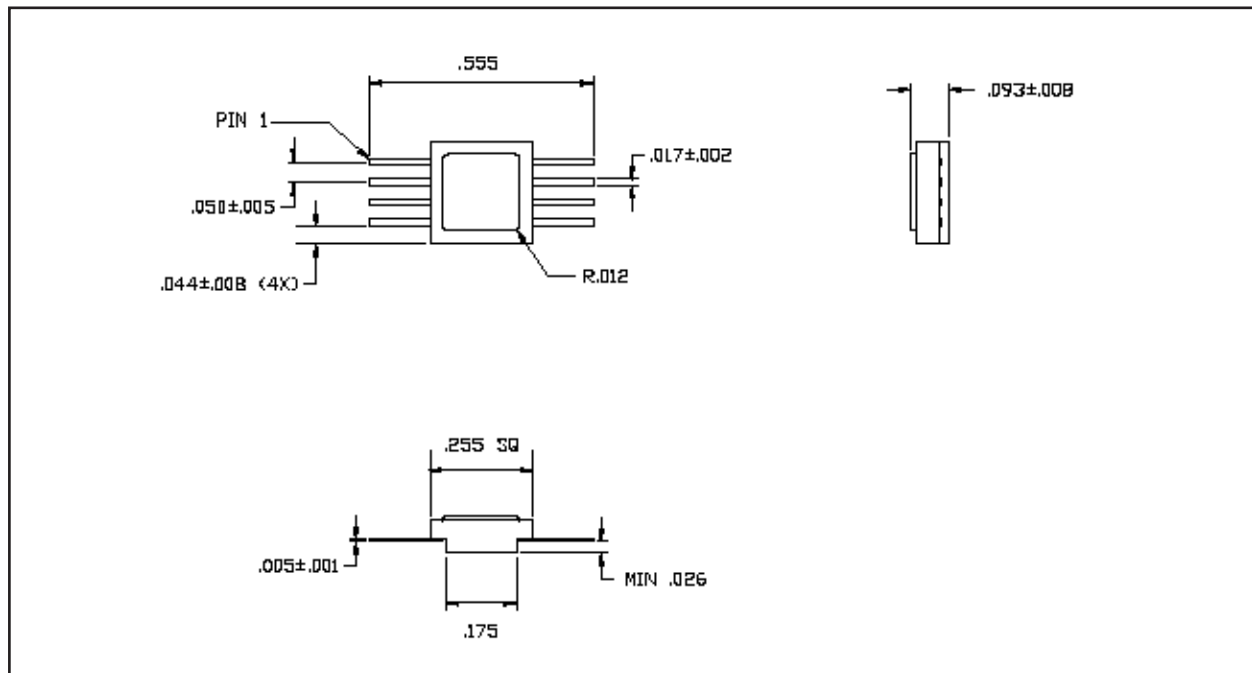


Figure 7. 8-pin Flatpack package outline

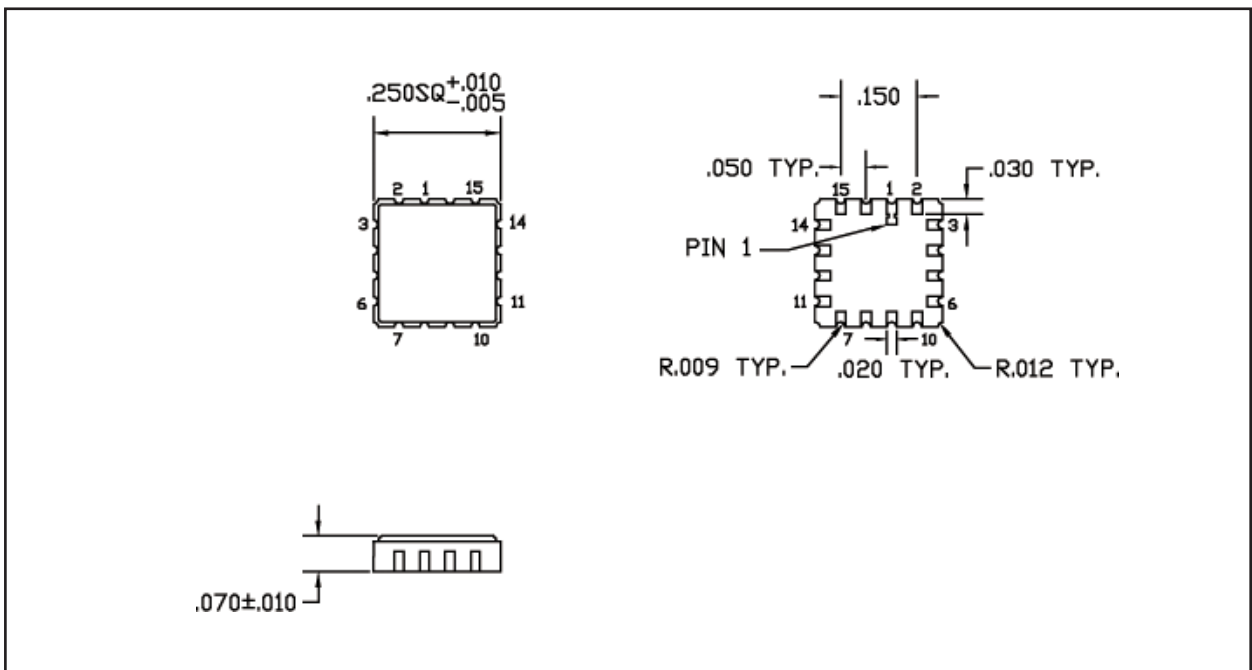


Figure 8. 16-pin LCC package outline

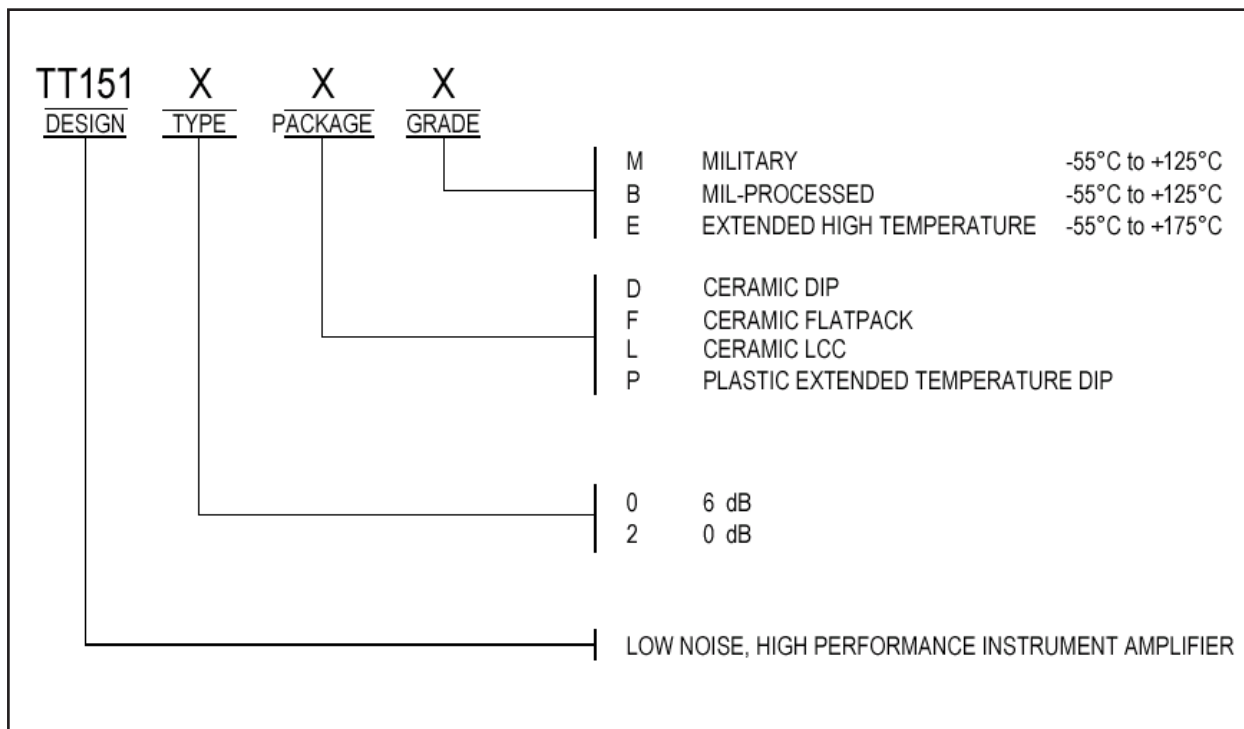


Figure 9. Order Information